



HYDRO SERIES

GYPSUM BLOCK WALL SYSTEM

DRYWALL CONSTRUCTION

4HRS FIRE RATED | WATER REPELLENT | HIGH STRENGTH



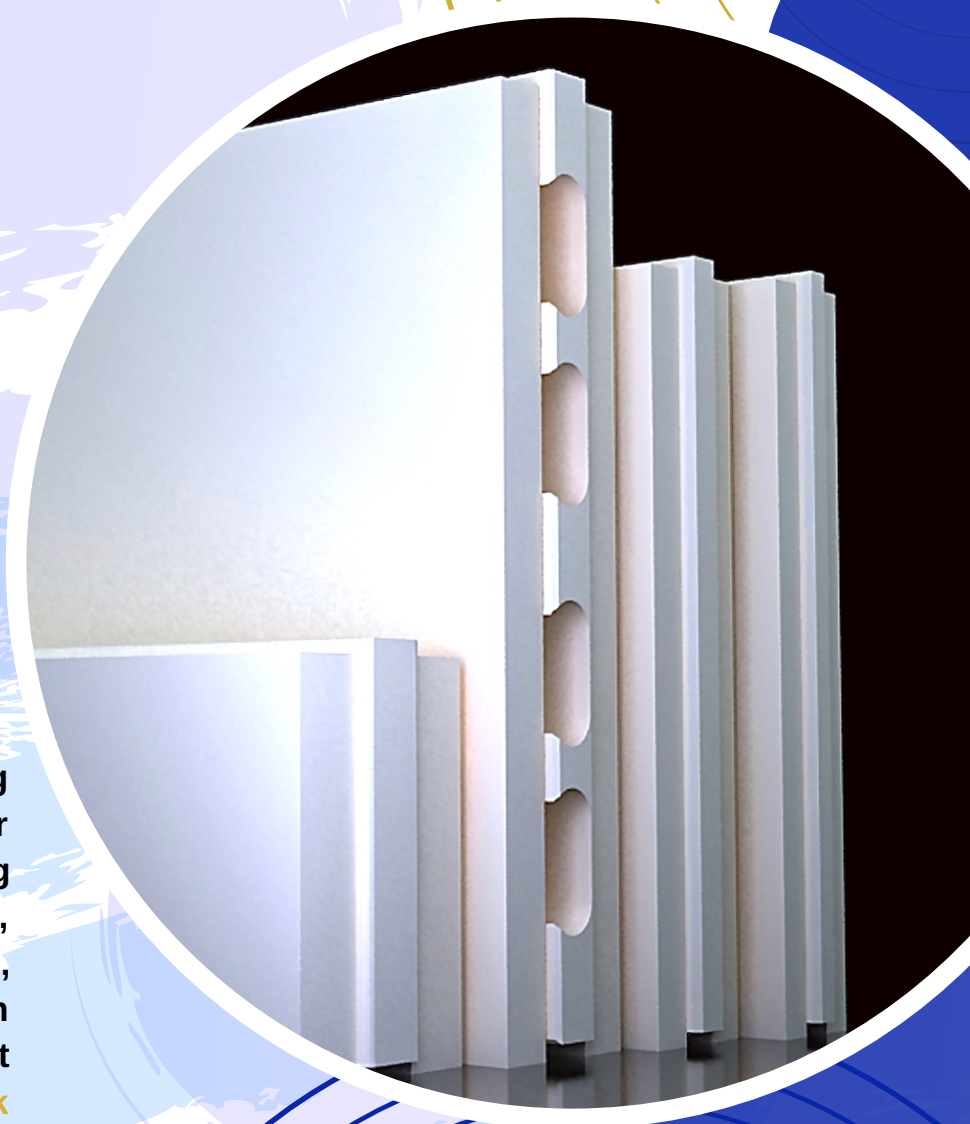
SOLE DISTRIBUTOR

Marshal Group is the pioneering distributor of high strength water repellent gypsum block walling system in Hong Kong, Macau, Indonesia, Cambodia, Singapore, Malaysia, Philippines and Vietnam which carries the trade product name of **JUMBO Gypsum Block Wall System**

**Walling System
Expert**



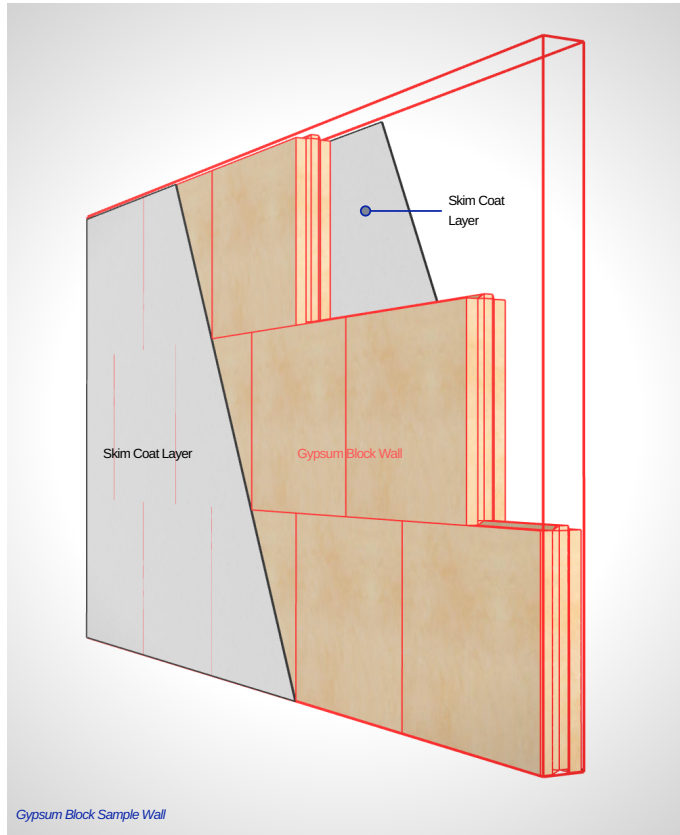
www.marshal-eng.com



OUR FEATURED GREEN PRODUCT

Jumbo Water Repellent Gypsum Block is a lightweight wall building material composed of gypsum as the main material known as Calcium Sulphate Dihydrate ($\text{CaSO}_4 \cdot 2\text{H}_2\text{O}$). It contains auxiliary materials and additives and is made from calcination, stirring, forming and drying.

It is used for building non-load bearing interior partition walls & exterior walls with superior fixtures holding capability.



APPLICATION

Highly suitable for Non-load bearing Partition Walls (Interior & Exterior) in:

-  Residential Buildings (Low & High Rise)
-  Shophouses
-  Casino
-  Hospitals
-  Factories
-  Schools
-  Resorts

BENEFITS



Cost Effective

Overall Project cost saving could be achieved.



Quick Installation

No time consuming plastering work required.



Light Weight

Enable reduction in structural load.



Crack Free

No dry-shrinkage crack occurrence.



4Hrs Fire Rated Protection (FRP)

Excellent fire resistant capability.



Durable & Tough

Passed the "7" Seismic Taiwan's 921 Earthquake Simulation & Beaufort scale "13" typhoon Wind Pressure Resistance simulation.



Water Repellent & Anti Microbial

Less than 5% water absorption rate resulting in prevention of microbial build up



Superior Sound Insulation

100mm thickness reduces around 45db.



Low Radioactivity Emission (Healthy)

A non toxic material with significantly lower radioactivity emission compared to conventional blocks or bricks.



Energy Saving

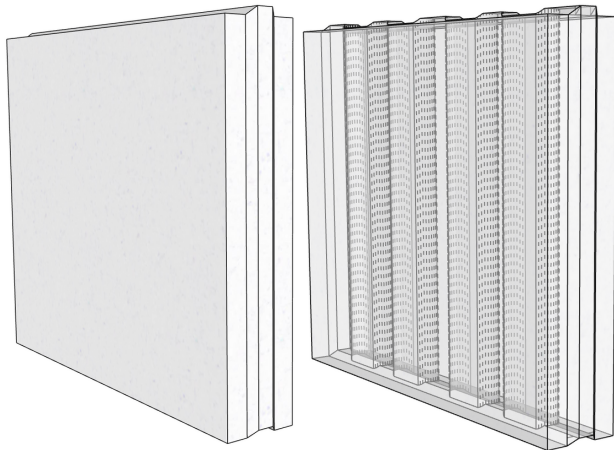
Superior thermal insulation capability contributing to reduction in air conditioning usage.



GYPSUM BLOCK SPECIFICATION

Color Options:

White Reddish



Solid Block

Hollow Block



80 HYDRO SERIES GYPSUM BLOCK

Super Thin Solid Block (80mm Thickness)

Size (WxHxT):	600mm x 500mm x 80mm
Model: BS80M	600mm x 500mm x 80mm
Feature:	Solid Block
Weight & Density:	27kg, 1100kg/m ³
Max.Wall Height w/o Stiffener:	7meters
Sound Insulation:	42dB

100 HYDRO SERIES GYPSUM BLOCK

Solid & Hollow Blocks (100mm Thickness)

Size (WxHxT):	600mm x 500mm x 100mm
Model: BS100M	600mm x 500mm x 100mm
Model: BS100-400H	600mm x 400mm x 100mm
Model: BH100M	600mm x 500mm x 100mm
Model: BH100-400M	600mm x 400mm x 100mm
Feature:	Solid Block
Model: BS100M	Solid Block
Model: BS100-400H	Solid Block- High Density
Model: BH100M	Hollow Block
Model: BH100-400M	Hollow Block

Weight & Density:	33kg, 1100kg/m ³
Model: BS100M	33kg, 1100kg/m ³
Model: BS100-400H	29kg, 1200kg/m ³
Model: BH100M	25kg, 1100kg/m ³
Model: BH100-400M	20kg, 1100kg/m ³

Max.Wall Height w/o Stiffener: 8 meters

Sound Insulation:	45dB
Model: BS100M	45dB
Model: BS100-400H	47dB
Model: BH100M	44dB
Model: BH100-400M	44dB

150 HYDRO SERIES GYPSUM BLOCK

Solid & Hollow Blocks (150mm Thickness)

Size (WxHxT):	600mm x 245mm x 150mm
Model: BS150-245M	600mm x 245mm x 150mm
Model: BS150-245H	600mm x 245mm x 150mm
Model: BH150-245M	600mm x 245mm x 150mm
Model: BH150-350M	600mm x 350mm x 150mm
Feature:	Solid Block
Model: BS150-245M	Solid Block
Model: BS150-245H	Solid Block- High Density
Model: BH150-245M	Hollow Block
Model: BH150-350M	Hollow Block

Weight & Density:	25kg, 1100kg/m ³
Model: BS150-245M	25kg, 1100kg/m ³
Model: BS150-245H	27kg, 1200kg/m ³
Model: BH150-245M	18kg, 1100kg/m ³
Model: BH150-350M	26kg, 1100kg/m ³

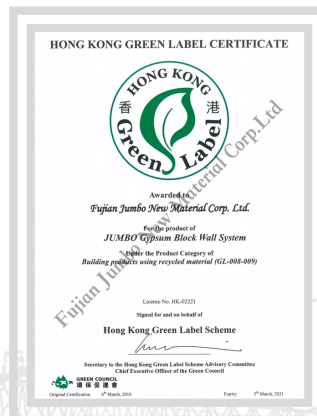
Max.Wall Height w/o Stiffener: 10 meters

Sound Insulation:	50dB
Model: BS150-245M	50dB
Model: BS150-245H	52dB
Model: BH150-245M	50dB
Model: BH150-350M	50dB

*All models have Fire Rating Protection, (FRP) of 4hrs & Water Absorption Rate of less than 5%

CERTIFICATIONS & TESTS

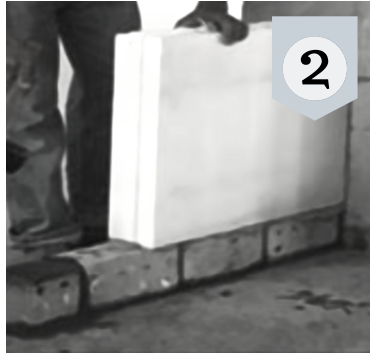
Inspection Standard/ Qualifier Name	Certification / Test Item
ISO 9001 Certificate	Quality Management System Certification
ISO 14001 Certificate	Environmental Management System Certification
Hong Kong Green Label Certificate	Overall evaluation of product, production technology and production environment
Singapore Green Building Product Certificate	Overall evaluation of product, production technology and production environment
BS EN 1364-1:1999 & BS 476-Part 20 & 22	4h Fire Rating Protection (FRP)
BS EN ISO 10140-2:2010 & ASTM E90-09	Sound insulation test: 80mm 40dB; 100mm 45dB; 150mm 50dB.
Taiwan's magnitude-7 seismic test	Anti-seismic property (simulation of Sept. 21 earthquake in Taiwan)
Wind and rain test CNS 1397 1/ 4	Air tightness, water tightness, wind pressure resistance (simulation of Beaufort scale 13 typhoon)
Radioactivity test RML-OS-02	Passed
Heavy metal NIEA	Passed (Ag, As, Cd, Cr, Cu, Hg and Pb)



6 QUICK & EASY INSTALLATION STEPS



1



2



3



4



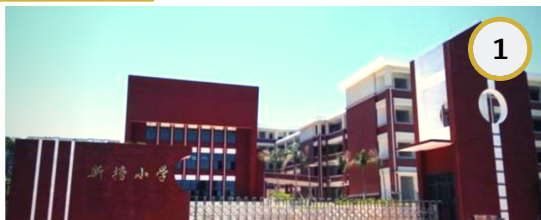
5



6

1. Wall position marking.
2. Masonry using Jumbo gypsum block and adhesive.
3. Lintel erection for doors or windows.
4. Flatness inspection.
5. Grooving for electrical ducts or water pipes.
6. Groove filling.

PROJECTS- PARTIAL LIST



1



2



3



4



5



6



7

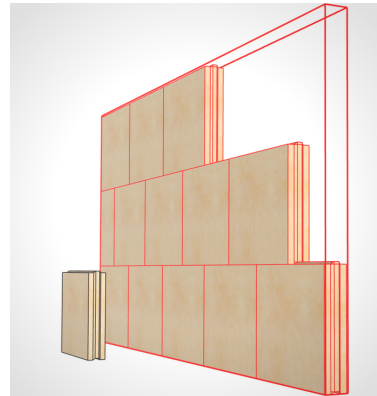


8



9

1. Xiamen Software Park Phase II
2. Chengdu's Imperial Palace
3. Sha Tin Race Course
4. Fujian Xiamen Train Terminal
5. Hong Kong Adventist Hospital
6. Studio City Macau
7. Taiwan Regal Supreme Hotel
8. Hong Kong - Zhuhai - Macao Bridge Building
9. Grand Lisboa Hotel



Contact Us:

Hong Kong (Head Office):

Marshal Engineering Services Co. Limited

Unit 8, 18/F, Prosperity Place, 6 Shing Yip Street,
Kwun Tong, Kowloon, Hong Kong.

Phone: +852 34602901

Fax: +852 34602907

Email: enquiries@marshal-eng.com

Macau | Singapore | Cambodia | Indonesia | Malaysia | Philipines | Vietnam



www.marshal-eng.com